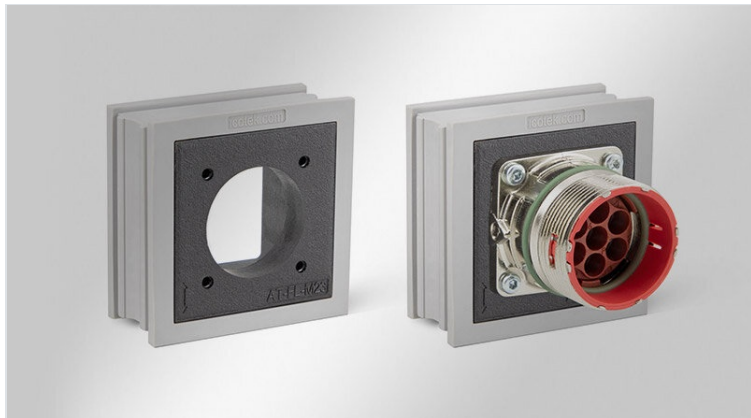


# AT-FL adapter grommets

based on KT large, for M23 square flange / IP65



The grommet AT-FL is constructed on the basis of a large KT cable grommet. The polyamide body is moulded with elastomer. All square flanges with dimensions 19.8 x 19.8 mm (M23) can be integrated.

The insertion of AT-FL into an icotek cable entry frame enables the routing of cables with and without connectors in combination with the creation of interfaces for M23 connectors within one cable entry system. Separate cut-outs for connectors are no longer necessary.

AT-FL provides ingress protection of up to IP65 (depending on the used flange and connector).



## Specifications

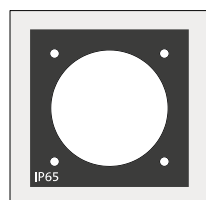
<b>IP rating (EN 60529)</b>	IP54, IP55, IP64, IP65
<b>Material</b>	Elastomer Body: Polyamide
<b>Flame class</b>	UL94-V0, self-extinguishing
<b>Operating temperature</b>	-40 C° to 90 C°
<b>Properties</b>	silicone free, halogen free

## Advantages & Benefits

- By utilising the AT-FL grommet, connectors can be integrated directly into the cable entry frame
- Separate cut-outs for connectors are no longer necessary
- Space-saving solution
- Cost-saving assembly

## Product types & Sizes

### AT-FL-M23



Part No.	<b>39965</b>
EAN	<b>4251269323768</b>
Package quantity	<b>5</b>
Length	<b>42 mm</b>
Width	<b>41,5 mm</b>
Height	<b>19 mm</b>
Mounting height	<b>2 mm</b>